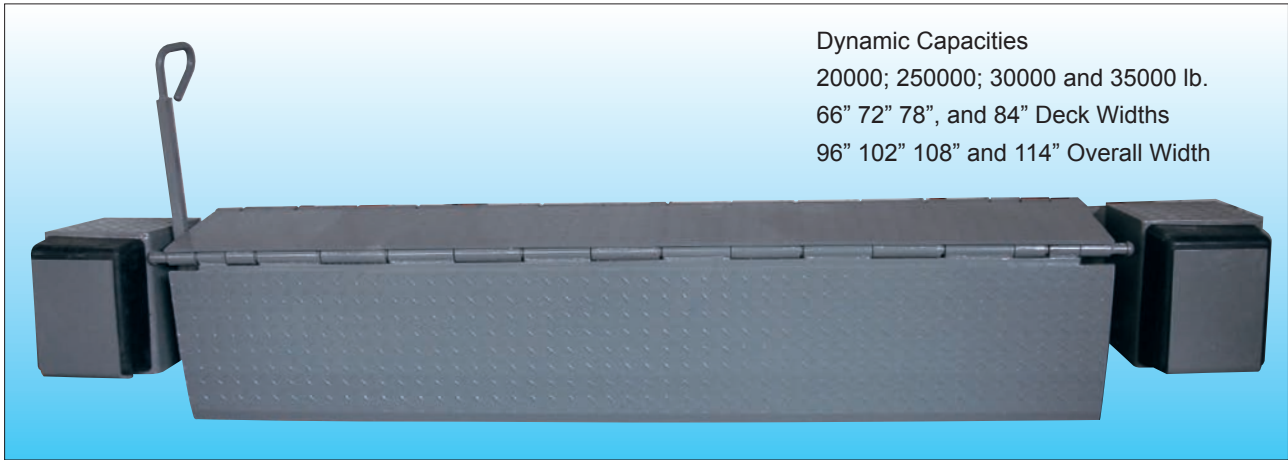


www.ep-ep.com

Mechanical Edge-of-Dock Leveler



Dynamic Capacities
20000; 250000; 30000 and 35000 lb.
66" 72" 78", and 84" Deck Widths
96" 102" 108" and 114" Overall Width

Valuable, Affordable and Dependable each EP Mechanical Edge-of-Dock Leveler

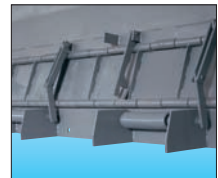
Offering a range of lengths, widths, and dynamic capacities, the Edge-of-Dock Leveler combines rugged durability with a competitive price. Edge-of-Dock Levelers provide an operating range of 5" above and 5" below dock, with a minimum lip projection of 12 3/4" and an overall span of 27 3/4". Broad centerplate and lip are constructed of 55,000 lb. minimum yield steel tread plate. Grease fittings on continuous lip hinge are standard with each unit.

STANDARD FEATURES

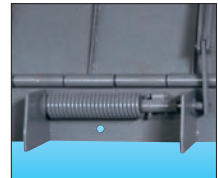
- Centerplate and lip are constructed of 55,000 lb. Minimum Yield Steel Tread Plate.
- Formed, plate steel Bump Blocks and steel faced molded cord Rubber Bumpers protect dock face and Leveler from truck damage.
- Continuous Hinge Design with Grease Fittings included as standard with each unit.
- Torsion Spring Design allows simple, precise adjustment.
- Steel Rivets located at either end of the centerplate hinge provide easy, forklift installation.
- Leveler raises and extends smoothly onto truck bed with use of convenient Bar Handle.
- Unit is easily recycled with truck in position and automatically returns to stored position upon truck departure.
- Stronger Rib reinforcement underneath the centerplate.
- Flat Models available for pallet jack operation.

WARRANTY

- EP offers a 2-year warranty on structural members
- EP offers a 1-year warranty on mechanical and miscellaneous parts, including spring



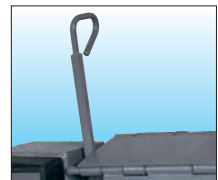
Formed Steel Gussets & Rib Reinforcement



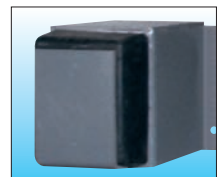
Torsion Spring



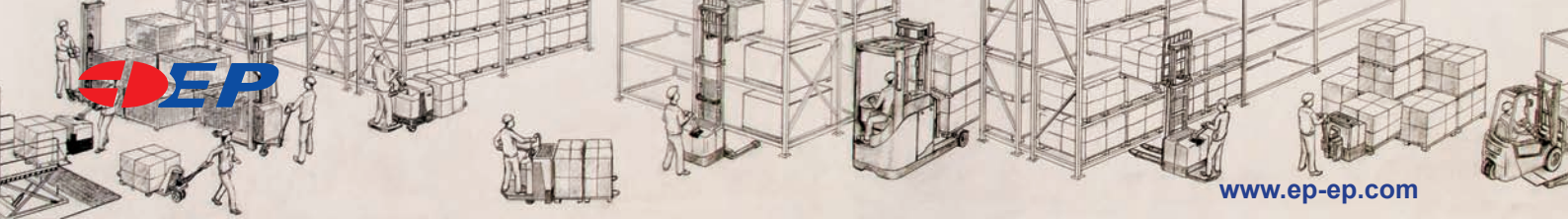
Pushover Bar



Barlift



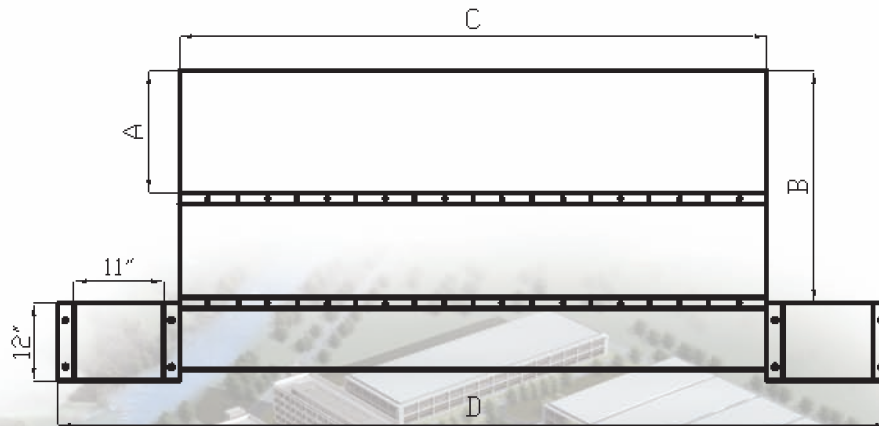
Bump Block & Molded Cord Rubber



SPECIFICATION

Mechanical Edge-of-Dock Leveler (inch)

Model		EOD20-BL66 EOD25-BL66 EOD30-BL66	EOD20-BL72 EOD25-BL72 EOD30-BL72	EOD20-BL78 EOD25-BL78 EOD30-BL78	EOD20-BL84 EOD25-BL84 EOD30-BL84
Capacity		20000/25000/30000lbs	20000/25000/30000lbs	20000/25000/30000lbs	20000/25000/30000lbs
Lip length	A	15"	15"	15"	15"
Span	B	27 3/4"	27 3/4"	27 3/4"	27 3/4"
Deck width	C	66"	72"	78"	84"
Overall width	D	96"	102"	108"	114"
Travel	Up	5"	5"	5"	5"
	Down	5"	5"	5"	5"



SIMPLE OPERATION

1. Lift the bar up from the stored position. The bar will halt angled towards the truck.
Then pull the bar handle back and down towards you. The barlift will automatically lock into position.
2. Pull the bar up and forward.
3. Lip automatically rides forward onto truck bed
4. To prevent damage to the bar, return it to the stored position.

China: (Headquarters)
E-P EQUIPMENT CO., LTD
 No. 121 YongHua Street, Shi Qiao Road,
 Xia Cheng Qu, Hangzhou, China
 Tel: +86-571-28035677/28035668/28035672
 Fax: +86-571-28035670
 Email: warehousesolution@ep-ep.com

USA:
E-P EQUIPMENT, USA CORP.
 1770 Campton Road
 Inmam, SC 29349
 Tel: 864-472-2776
 Fax: 864-472-2765
 E-mail: info@ep-ep.com

Japan:
E-P EQUIPMENT JAPAN
 #1052-16-10 Hirao, Inagi-shi
 Tokyo 206-0823 Japan
 Tel: 81-42-3506422
 Fax: 81-42-3506423
 E-mail: ep-japan@ep-ep.com

Korea:
E-P EQUIPMENT KOREA
 1058-Ra Dong, Buck Yi-Dong,
 Ilsan/Gu, Koyang/Shi, Kyunggi/
 Du, Korea
 Tel: 82-31-9254100
 Fax: 82-31-9254102
 E-mail: ep@ep-ep.co.kr