



# EP20-RAP

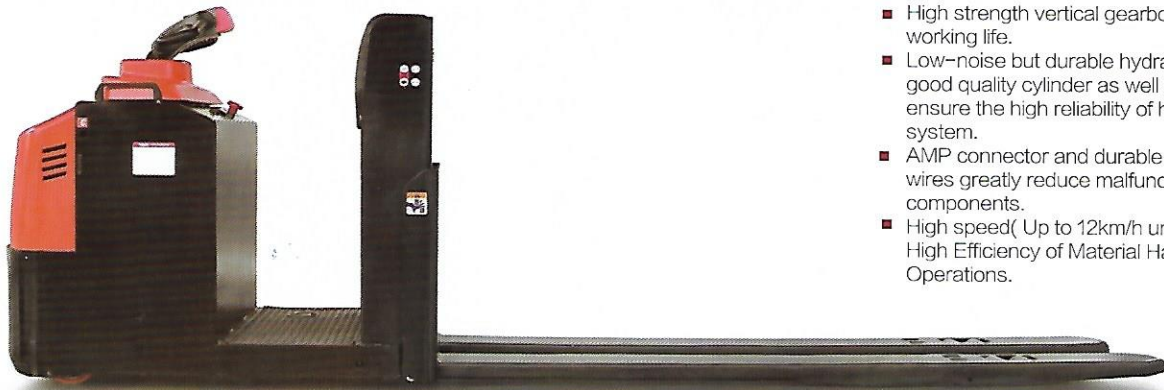
Low Order Picker 2.0t

Electronic Power Steering Makes Operation Easy & Fast;  
Driving Motor Offers Stronger Power to Obtain Top Speed of 12KM/H;  
Braking-down in Curved Aisle Ensures the Smoothness and Stability.

EP EQUIPMENT CO.,LTD  
[www.ep-ep.com](http://www.ep-ep.com)

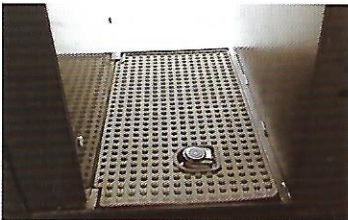
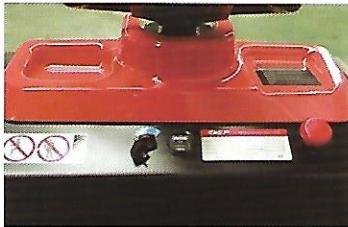
TD  
om

## ▣ FEATURE



### Performance

- The innovative AC system offers strong power, accurate control, excellent performance.
- High strength vertical gearbox, longer working life.
- Low-noise but durable hydraulic unit, good quality cylinder as well as hose ensure the high reliability of hydraulic system.
- AMP connector and durable electric wires greatly reduce malfunctions of components.
- High speed( Up to 12km/h unladen), High Efficiency of Material Handling Operations.



### Safety

- Safety foot switch avoids operators from misoperation.
- Automatic braking and reverse current braking when foot switch is off or travel switch is neutral.
- Emergency disconnecter will cut off power source to avoid accident when truck goes out of control.
- The function of skidproof brake avoid the truck skidding down when truck goes out of control or travelling on grade.
- Dual-monitoring power steering.

### Operation

- With the new design of ergonomical tiller head, all buttons can be reached conveniently & comfortably.
- With backrest cushion, spacious operation room and vibration absorber pedal, the operator feels more comfortable.
- Side-open battery compartment design for easy replacement and maintenance.
- Coast control function, convenient for order picking.
- Electric power steering, smooth & comfortable (EPS).

### Maintenance

- AC traction motor, maintenance free.
- Hour meter and battery indicator remind the operator of battery charging.
- Easily remove the back cover by only loosening two bolts; Access to all key components for inspection, maintenance and replacement.
- Vertical motor makes the inspection & service much more convenient.
- Control system allows easy trouble-shooting.
- Low voltage lift cut off design protects the battery.

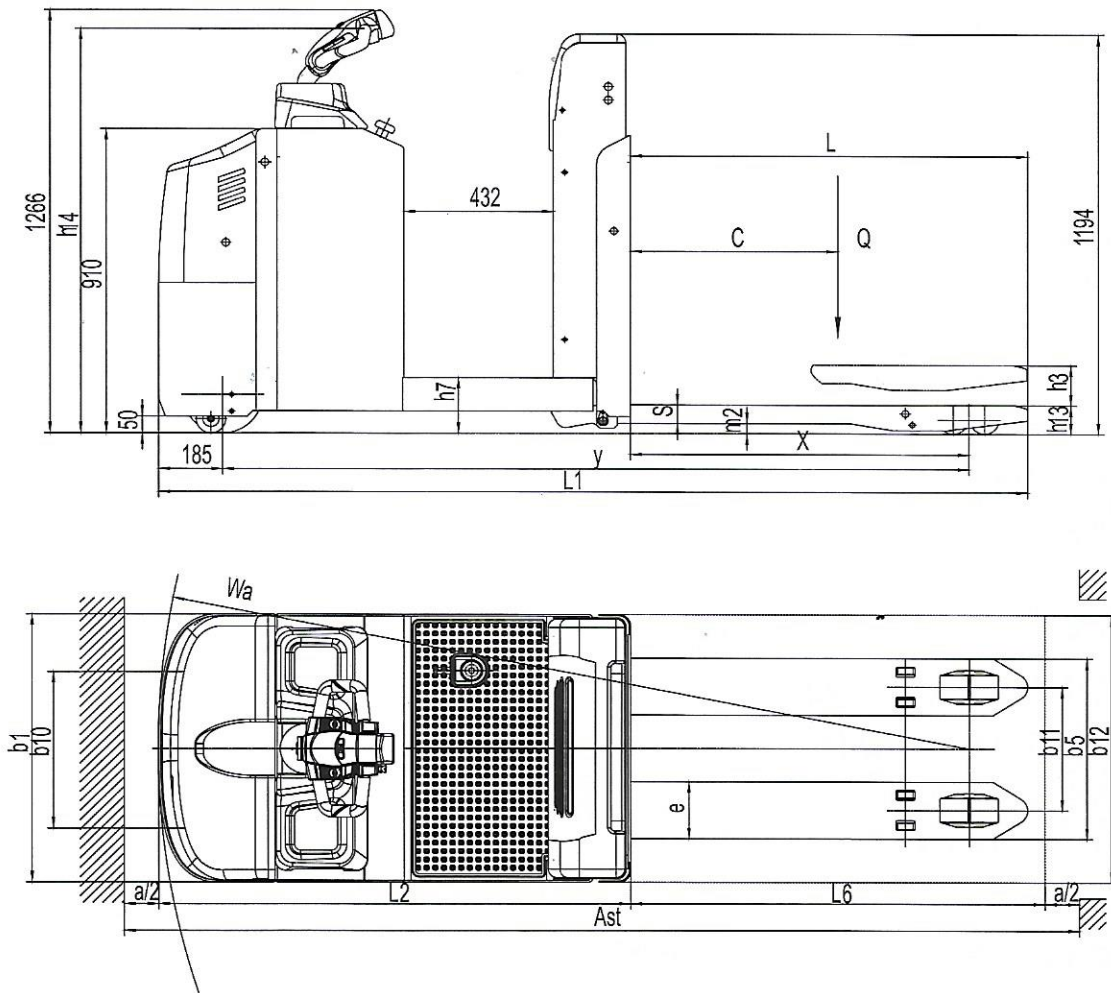
# Low order picker 2.0t EPT20-RAP

Distinguishing mark				
1.1	Manufacturer			EP
1.2	Model designation			EPT20-RAP
1.3	Drive unit			Electric
1.4	Type of operation			standing
1.5	Rated capacity	Q	kg	2000
1.6	Load center distance	c	mm	600 1200
1.8	Load distance , centre of drive axle to fork	x	mm	980 1860
1.9	Wheelbase	y	mm	2161 3041
Weight				
2.1	Service weight ( include battery )		kg	940 1050
2.2	Axle loading, laden driving side/loading side		kg	1200/1740 1210/1840
2.3	Axle loading, unladen driving side/loading side		kg	780/160 790/260
Types,Chassis				
3.1	Tyre type, driving wheels/loading wheels			PU/PU
3.2	Tyre size, driving wheels ( diameter*width )		mm	Φ230x90
3.3	Tyre size, loading wheels ( diameter*width )		mm	Φ85x70 / Φ83x115
3.4	Tyre size, caster wheels ( diameter*width )		mm	Φ180x65
3.5	Wheels, number driving , caster/loading (x=drive wheels)		mm	1x +1/4 / 1x +1/2
3.6	Track width, front,driving side	b <sub>10</sub>	mm	468
3.7	Track width,rear,loading side	b <sub>11</sub>	mm	370/430/515
Dimensions				
4.4	Lift height	h <sub>3</sub>	mm	120
4.8	Seat height/standing height	h <sub>7</sub>	mm	166
4.9	Height drawbar in driving position min./max.	h <sub>14</sub>	mm	1220
4.15	Lowered height	h <sub>10</sub>	mm	85
4.19	Overall length	l <sub>1</sub>	mm	2516 3770
4.20	Length to face of forks	l <sub>2</sub>	mm	1366
4.21	Overall width	b <sub>2</sub> / b <sub>2</sub>	mm	800
4.22	Fork dimensions	s/ e/ l	mm	55/170/1150 55/170/2400
4.25	Distance between fork-arms	b <sub>5</sub>	mm	540/600/685
4.32	Ground clearance, center of wheelbase	m <sub>2</sub>	mm	30
4.34.1	Aisle width for pallets 1000 × 1200 crossways	Ast	mm	2568 3967
4.34.2	Aisle width for pallets 800 × 1200 lengthways	Ast	mm	2768 3967
4.35	turning radius	Wa	mm	2348 3227
Performance data				
5.1	Travel speed, laden/ unladen		km/ h	9/12
5.2	Lifting speed, laden/ unladen		m/ s	0.026/0.034
5.3	Lowering speed, laden/ unladen		m/ s	0.025/0.021
5.8	Max. gradeability, laden/unladen			8/13
5.10	Service brake type			Electromagnetic
Electric-engine				
6.1	Drive motor rating S2 60 min		kW	2.5
6.2	Lift motor rating at S3 15%		kW	0.84
6.3	The maximum allowed size battery		mm	740*350*620
6.4	Battery voltage/nominal capacity K5			24/360
6.5	Battery weight		kg	330
Addition data				
8.1	Type of drive unit			AC
10.5	Steering type			Electronic
10.7	Sound pressure level at the driver's ear			74

1.The parameters in the table are of the standard model. For more information, please contact us.  
2.The parameters are subject to change without notice.



er



## Option

Options	EPT20-20RAP
Fork length	●1150/2400mm
Fork width	●540/685mm
High capacity battery	●480Ah
Cold storage	●