



CQE12/CQE15S

Electric Stacker 1.2/1.5t

Special Design For Narrow Aisle and Non-standard Pallets

EP EQUIPMENT CO.,LTD
www.ep-equipment.com

FEATURE

Performance

- The innovative AC system offers strong power, accurate control, excellent performance.
- High strength vertical gearbox, longer working life.
- Low-noise but durable hydraulic unit, good quality cylinder as well as hose ensure the high reliability of hydraulic system.
- AMP connector and durable electric wires greatly reduce malfunctions of components.
- CJ shape mast channel improves the strength of the whole truck.
- Applied with electric valve on & better heat releasing systems support long time operation.



Safety

- Safe hydraulic system design prevents mast from falling down abruptly when hydraulic pipeline cuts off.
- Emergency reverse button protects the operator from getting hurt.
- Emergency disconnecter will cut off power source to avoid accident when truck goes out of control.
- Multiple lifting limit protection ensures safety.
- Automatic switch to lower speed when the fork reaches its setting height.
- Anti-rolling back brake keeps the truck from skidding down when truck is out of control or travelling on ramp.
- Electric valve will be locked up when power is cut off.
- Dual monitoring power steering.



Operation

- With the new design of ergonomical tiller head, all buttons can be reached conveniently & comfortably.
- Foldable platform reduces vibration which makes operator feel more comfortable.
- Compact design, flexible and operational.
- When platform is folded, truck can work at low speed in smaller space.
- Side-open battery design for easy battery replacement and various applications.
- Electric proportional valve equipped as standard feature.
- Electric power steering, smooth & comfortable (EPS).

Maintenance

- AC traction motor, maintenance free.
- Hour meter and battery indicator remind the operator of battery charging.
- Easily remove the back cover by only loosening two bolts; Access to all key components for inspection, maintenance and replacement.
- Vertical motor makes the inspection & service much more convenient.
- Control system allows easy trouble-shooting.
- Low voltage cut off setting protects batteries.



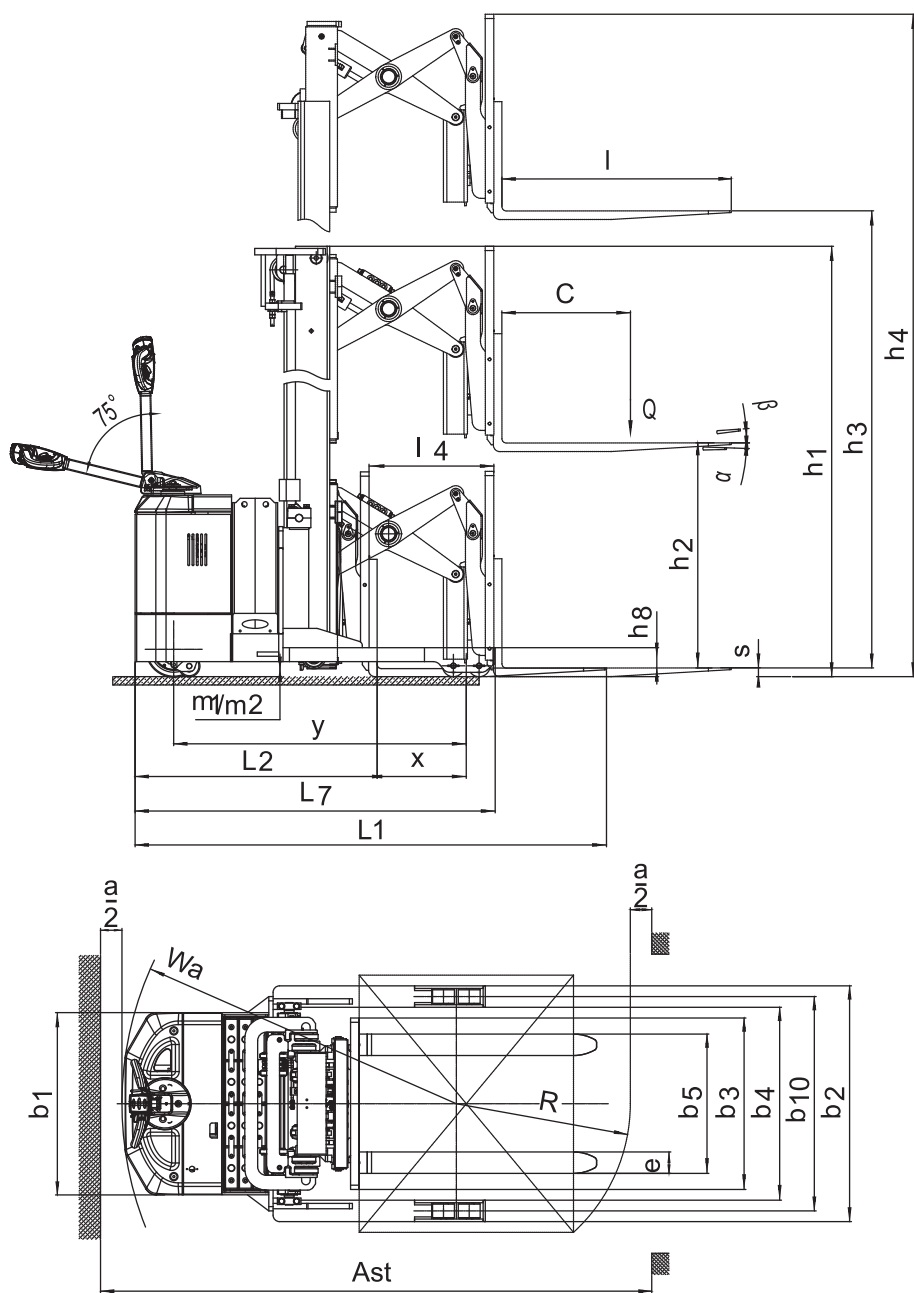
Reach Fork Electric Stacker 1.2/1.5t

CQE12/CQE15S

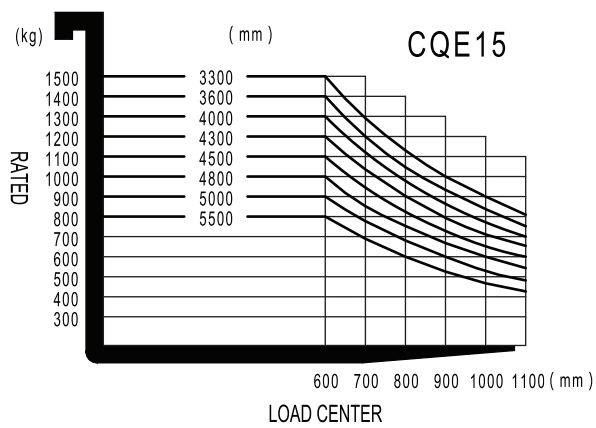
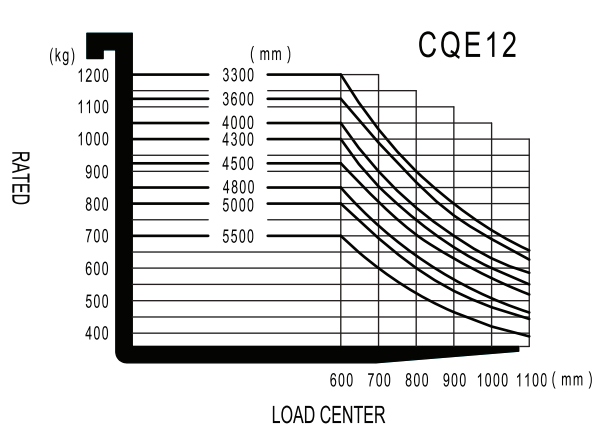
Distinguishing mark				
1.1	Manufacturer		EP	EP
1.2	Model designation		CQE12	CQE15S
1.3	Drive unit		Electric	Electric
1.4	Type of operation		pedestrian	standing
1.5	Rated capacity	Q t	1.2	1.5
1.6	Load center distance	c mm	600	600
1.9	Wheelbase	y mm	1365	1395
Weight				
2.1	Service weight (include battery)	kg	1835①	1865①
2.2	Axle loading, fork advanced, unladen driving side/loading side		1140/705	1150/715
2.3	Axle loading, fork retracted, unladen driving side/loading side		1240/605	1250/615
2.4	Axle loading, fork advanced, laden driving side/loading side	kg	285/2760	310/3055
2.5	Axle loading, fork retracted, laden driving side/loading side	kg	975/2070	1075/2290
Types,Chassis				
3.1	Tyre type driving wheels/loading wheels		PU/PU	PU/PU
3.2	Tyre size, driving wheels (diameter×width)	mm	Φ230× 75	Φ260× 105
3.3	Tyre size, loading wheels (diameter×width)	mm	Φ102× 73	Φ102× 73
3.4	Tyre size, caster wheels (diameter×width)		—	Φ100× 73
3.5	Wheels, number driving , caster/loading (x=drive wheels)	mm	1×/4	1×2/4
3.6	Track width, front,driving side	b ₁₀ mm	0	0
3.7	Track width,rear,loading side	b ₁₁ mm	1000	1000
Dimensions				
4.1	Tilt of mast/fork carriage forward/backward	α/ β °	2/4	2/4
4.2	Height, mast lowered	h ₁ mm	2090 ②	2090 ②
4.3	Free lift (load backrest)	h ₂ mm	0 ②	0 ②
4.4	Lift height	h ₃ mm	3000 ②	3000 ②
4.5	Height, mast extended	h ₄ mm	3960 ②	3960 ②
4.8	Seat height/standing height	h ₇	—	150
4.10	Height of wheel arms	h ₈ (mm) mm	135	135
4.19	Overall length (minimum)	l ₁ mm	2200 ③	2340 ③
4.20	Length to face of forks	l ₂ mm	1130	1270
4.21	Overall width	b ₁ / b ₂ mm	1100	850/1100
4.22	Fork dimensions	s/ e/ l mm	40/100/1070	40/100/1070
4.23	Fork carriage class/type A, B	mm	A	A
4.24	Fork carriage width	b ₃ mm	800	800
4.25	Distance between fork-arms	b ₅ mm	200-780	200-780
4.26	Distance between wheel arms/loading surfaces	b ₄ mm	900	900
4.28	Reach distance	l ₄ mm	590	590
4.31	Ground clearance, laden, below mast	m ₁ mm	70	70
4.32	The minimum ground clearance of frame	m ₂ mm	70	70
4.34.1	Aisle width for pallets 1000 × 1200 crossways	Ast mm	2570 ③	2695 ③
4.34.2	Aisle width for pallets 800 × 1200 lengthways	Ast mm	2610 ③	2730 ③
4.35	turning radius	Wa mm	1560	1690
4.37	Length across wheel arms (exclusive fork)	l ₇ mm	1680	1820
Performance data				
5.1	Travel speed, laden/ unladen	km/ h	5.5/6	5.5/6
5.2	Lifting speed, laden/ unladen	m/ s	0.09/ 0.135	0.09/ 0.135
5.3	Lowering speed, laden/ unladen	m/ s	0.16/ 0.15	0.16/ 0.15
5.4	Reaching speed, laden / unladen	m/ s	0.08/0.08	0.08/0.08
5.8	Max. gradeability, laden/unladen	%	6/10	6/10
5.10	Service brake type		Electromagnetic	Electromagnetic
Electric-engine				
6.1	Drive motor rating S2 60 min	kW	1.27/1.5	3.3
6.2	Lift motor rating at S3 15%	kW	3	3
6.3	The maximum allowed size battery	mm	815×208×630	815×208×630
6.4	Battery voltage/nominal capacity K5	V/ Ah	24/210 ④	24/280 ④
6.5	Battery weight	kg	190 ④	230 ④
Addition data				
8.1	Type of drive unit		AC	AC
10.5	Steering type		Mechanical	Electronic
10.7	Sound pressure level at the driver's ear	dB (A)	74	74

1.The parameters in the table are of the standard model. For more information, please contact us.

2.The parameters are subject to change without notice.



RATED CAPACITIES GRAPH



① Service weight (include battery)

Mast height(mm)	Service weight (kg)	
2-stage mast	CQE12	CQE15
2700	1825	1855
3000	1835	1865
3300	1845	1875
3600	1855	1885
4000	1865	1895
4300	1875	1905
3-stage mast	CQE12	CQE15
4000	2065	2095
4500	2080	2110
4800	2090	2120
5000	2095	2125
5500	2110	2140

② Mast

2-stage mast CQE12/CQE15			
Lift height	Lowered mast height	Free lift	Extended mast height
h_3	h_1	h_2	h_4
2700	1940	0	3660
3000	2090	0	3960
3300	2240	0	4260
3600	2390	0	4560
4000	2590	0	4960
4300	2740	0	5260
3-stage mast CQE12/CQE15			
Lift height	Lowered mast height	Free lift	Extended mast height
h_3	h_1	h_2	h_4
4000	1960	1000	4955
4500	2130	1170	5455
4800	2230	1270	5760
5000	2295	1335	5960
5500	2460	1500	6460

③ Dimensions (mm)

		CQE12		CQE15	
		2-stage mast	3-stage mast	2-stage mast	3-stage mast
Overall length (minimum)	l_1	2200	2210	2340	2350
Aisle width for pallets 1000 × 1200 crossways	Ast	2570	2580	2695	2705
Aisle width for pallets 800 × 1200 lengthways	Ast	2610	2620	2730	2750
Aisle width for pallets 1000 × 1200 lengthways	Ast	2660	2670	2785	2795
Aisle width for pallets 800 × 1200 crossways	Ast	2455	2460	2580	2585

④ Battery

CQE12	standard	option	option	option
Capacity (Ah)	210	224 (maintenance free battery)	280	360
Battery weight (kg)	190	150	230	300
CQE15	standard	option	option	option
Capacity (Ah)	280	224 (maintenance free battery)	210	360
Battery weight (kg)	230	150	190	300

Option

options	CQE12	CQE15
driving pedal	●	○
Electronic Power steering	●	○
High capacity battery	●224/280/360Ah	●210/224/360Ah
Cold storage	●	●
side shift	●	●
Water auto-filling system	●	●
Proportional valve	●	○
● option ○ standard		

- 1.The parameters in the table are of the standard model. For more information, please contact us.
- 2.The parameters are subject to change without notice.



CQE12R

Electric Stacker 1.2t

FEATURE

Performance

- The innovative AC system offers strong power, accurate control, excellent performance.
- High strength vertical gearbox, longer working life.
- Low-noise but durable hydraulic unit, good quality cylinder as well as hose ensure the high reliability of hydraulic system.
- AMP connector electric wires and cables, greatly reducing electric parts failure rate.
- H shape mast channel improves the strength of the whole truck.
- Applied with electric valve on & better heat releasing systems support long time operation.

Safety

- Safe hydraulic system design prevents mast from falling down abruptly when hydraulic pipeline cuts off.
- Emergency reverse belly button protects the operator from getting hurt.
- Emergency disconnecter will cut off power source to avoid accident when truck goes out of control.
- Multiple lifting limit protection ensures safety.
- Anti-rolling back brake keeps the truck from skidding down when truck is out of control or travelling on ramp.
- Electric valve will be locked up when power is cut off.
- Dual-monitoring power steering.
- Automatically slow down speed when in turn (EPS).

Operation

- With the new design of ergonomical tiller head, all buttons can be reached conveniently & comfortably.
- Foldable platform reduces vibration which makes operator feel more comfortable.
- Compact design, flexible and operational.
- When platform is folded, truck can work at low speed in smaller space.
- Ergonomically designed safety guard with high strength feature.
- Electric proportional valve equipped as standard feature.
- Electric power steering, smooth & comfortable (EPS).

Maintenance

- AC traction motor, maintenance free.
- Hour meter and battery indicator remind the operator of battery charging.
- Easily remove the back cover by only losing two bolts; Access to all key components for inspection, maintenance and replacement.
- Vertical motor makes the inspection & service much more convenient.
- Control system allows easy trouble-shooting.
- Low voltage lift cut off design protects the battery.



Electric Stacker 1.2t

CQE12R

Distinguishing mark			
1.1	Manufacturer		EP
1.2	Model designation		CQE12R
1.3	Drive unit		Battery
1.4	Operator type		standing
1.5	rated capacity	Q	t
1.6	Load center distance	c	mm
1.9	Wheelbase	y	mm
Weight			
2.1	Service weight (include battery)	kg	1745 ①
2.2	Axle loading, fork advanced, unladen driving side/loading side	kg	1170/870
2.3	Axle loading, fork retracted, unladen driving side/loading side	kg	1430/600
2.4	Axle loading, fork advanced, laden driving side/loading side	kg	500/2760
2.5	Axle loading, fork retracted, laden driving side/loading side	kg	1090/2090
Types,Chassis			
3.1	Tyre type driving wheels/loading wheels		polyurethane/polyurethane
3.2	Tyre size, driving wheels (diameter×width)	mm	Φ230× 75
3.3	Tyre size, loading wheels (diameter×width)	mm	Φ210× 85
3.4	Tyre size, caster wheels (diameter×width)		Φ130× 55
3.5	Wheels, number driving , caster/loading (x=drive wheels)	mm	1×2/2
3.6	Track width, front,driving side	b ₁₀	mm
3.7	Track width,rear,loading side	b ₁₁	mm
Dimensions			
4.1	Tilt of mast/fork carriage forward/backward	α/ β	°
4.2	Height, mast lowered	h ₁	mm
4.3	Free lift (load backrest)	h ₂	mm
4.4	Lift height	h ₃	mm
4.5	Height, mast extended	h ₄	mm
4.8	Seat height/standing height	h ₇	mm
4.10	Height of wheel arms	h ₈ (mm)	mm
4.19	Overall length (minimum)	l ₁	mm
4.20	Length to face of forks	l ₂	mm
4.21	Overall width	b ₁ / b ₂	mm
4.22	Fork dimensions	s/ e/ l	mm
4.23	Fork carriage class/type A, B		mm
4.24	Fork carriage width	b ₃	mm
4.25	Distance between fork-arms	b ₅	mm
4.26	Distance between wheel arms/loading surfaces	b ₄	mm
4.28	Reach distance	l ₄	mm
4.31	Ground clearance, laden, below mast	m ₁	mm
4.32	The minimum ground clearance of frame	m ₂	mm
4.34.1	Aisle width for pallets 1000 × 1200 crossways	Ast	mm
4.34.2	Aisle width for pallets 800 × 1200 lengthways	Ast	mm
4.35	turning radius	Wa	mm
4.37	Length across wheel arms (exclusive fork)	l ₇	mm
Performance data			
5.1	Travel speed, laden/ unladen	km/ h	5.5/6.0
5.2	Lifting speed, laden/ unladen	m/ s	0.105/0.185
5.3	Lowering speed, laden/ unladen	m/ s	0.16/0.14
5.4	Reaching speed, laden / unladen	m/ s	0.08/0.10
5.8	Max. gradeability, laden/unladen	%	6/10
5.10	Service brake type		Electromagnetic
Electric-engine			
6.1	Drive motor rating S2 60 min	kW	1.5
6.2	Lift motor rating at S3 15%	kW	3
6.3	The maximum allowed size battery	mm	815×208×630
6.4	Battery voltage/nominal capacity K5	V/ Ah	24/210 ④
6.5	Battery weight	kg	190 ④
Addition data			
8.1	Type of drive unit		AC
10.5	Steering type		Electronic
10.7	Sound pressure level at the driver's ear	dB (A)	74

1.The parameters in the table are of the standard model. For more information please contact us.
2.The parameters are subject to change without notice.

① Service weight (include battery)

Mast height (mm)	Service weight(kg)
2-stage mast	
2500	1710
2700	1725
3000	1745
3300	1765
3600	1785
4000	1810
4300	1830
3-stage mast	
3500	1880
4000	1910
4500	1940
4800	1960
5000	1970
5500	2000

② Mast

2-stage mast			
Lift height	Lowered mast height	Free lift	Extended mast height
h_3	h_1	h_2	h_4
2500	1815	0	3500
2700	1915	0	3700
3000	2065	0	4000
3300	2215	0	4300
3600	2365	0	4600
4000	2565	0	5000
4300	2715	0	5300
3-stage mast			
Lift height	Lowered mast height	Free lift	Extended mast height
h_3	h_1	h_2	h_4
3500	1735	740	4500
4000	1900	905	5000
4500	2065	1070	5500
4800	2165	1170	5800
5000	2230	1235	6000
5500	2395	1400	6500

③ Dimensions(mm)

		2-stage mast	3-stage mast
Overall length (minimum)	l_1	2312	2354
Length to face of forks	l_2	1242	1284
Reach distance	l_4	500	470
Aisle width for pallets 1000*1200 crossways	A_{st}	2683	2715
Aisle width for pallets 800*1200 lengthways	A_{st}	2739	2776
Aisle width for pallets 1000*1200 lengthways	A_{st}	2785	2822
Aisle width for pallets 800*1200 crossways	A_{st}	2549	2574

④ Battery

	standard	option
Capacity (Ah)	210	280
Battery weight (kg)	190	230

